

SHOWVEN[®]

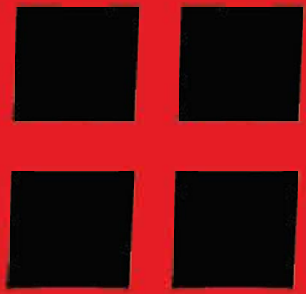
PASSION FOR INNOVATION

by PREMIUM FACTORY

Prices on www.premiumfactory.eu

***ASK US FOR YOUR
PROFESSIONAL PRICES !***

DISTRIBUTEUR OFFICIEL



PREMIUM FACTORY

Professional Special Effects

SHOWVEN®



Winner of Best Debut Product

TRUST THE ORIGINAL

PRODUCTS



Sparks Up Your Show

2016

2017



2018

2019





SPARKULAR® SPIN

- \ Bidirectional rotatable
- \ Adjustable rotation speed
- \ Two 20° angled nozzles generate a waltz-like lissome and romantic sparks effects
- \ Stainless steel panel, stable and durable
- \ DMX controllable, 2/4 channels switchable
- \ Built-in wireless control, easy programming



SPECIFICATIONS

- \ MODEL: BT81/BT82
- \ DIMENSION: 330×305×349mm
- \ WEIGHT: 20kg
- \ CASING MATERIAL: 304 stainless steel
- \ VOLTAGE: 220V(BT81)/110V(BT82), 50/60Hz
- \ WORK POWER: 1000W
- \ WORK TEMP.: -20°C~50°C
- \ EFFECT HEIGHT: HC8200 MEDIUM: 2~4m/LARGE: 2~5m
- \ HEIGHT ADJUSTABLE: YES
- \ EFFECT DIRECTION: two 20° angled nozzles
- \ HOPPER CAPACITY: 200g*2
- \ HC8200 CONSUMPTION RATE: 20g/min*2
- \ INTERFACE: Neutrik® powerCON TRUE1 IN/OUT
Neutrik® 3-pin&5-pin XLR IN/OUT
- \ CONTROL: DMX 2/4 channels switchable, wireless remote



SPARKULAR® JET

- \ Brand new effect originally invented by SHOWVEN
- \ Combination of detonation and flash sparkular effect
- \ Effect height adjustable from 5m to 10m
- \ Patented auto air compression technology, no external pressure tank needed
- \ Nozzle adaptors optional, achieve various firing angle
- \ Stainless steel housing with multi safety design, durable and reliable
- \ Neutrik® powerCON TRUE1 CONNECTORS



NEW



SPECIFICATIONS

- \ MODEL: BT91
- \ DIMENSION: 300x270x257mm
- \ WEIGHT: 13kg
- \ CASING MATERIAL: 304 Stainless steel
- \ VOLTAGE: 100-240V, 50/60Hz
- \ WORK POWER: 350W
- \ WORK TEMP.: -10 °C ~50 °C
- \ EFFECT HEIGHT: HC8200 LARGE: 5~10m/MEDIUM: 5~8m
- \ HOPPER CAPACITY: 350g
- \ CONSUMABLE CONSUMPTION: 10g/shot
- \ INTERFACE: 3-pin XLR, Neutrik® powerCON TRUE1 IN/OUT
- \ CONTROL: DMX, 2 channels
- \ Optional nozzle: Nozzle with adjustable firing angle
Triple head nozzle



SPARKULAR® PRO

- \ Original design, built for outdoor installations
- \ Stainless steel panel, durable and reliable
- \ 1200g super hopper, support long effects time
- \ Neutrik® waterproof sockets
- \ IP55-rated weatherproof enclosure, ideal for outdoor use
- \ Effects up to 5.5m, height adjustable



SPECIFICATIONS

- \ MODEL: BT71/BT72
- \ DIMENSION: 315×290×285mm
- \ WEIGHT: 16.5kg
- \ CASING MATERIAL: 304 stainless steel
- \ VOLTAGE: 220V(BT71)/110V(BT72), 50/60Hz
- \ WORK POWER: 600W(220V)/700W(110V)
- \ WORK TEMP.: -20°C~50°C
- \ EFFECT HEIGHT: HC8200 LARGE/LARGE: 5~5.5m adjustable
- \ EFFECT DIRECTION: vertical
- \ HOPPER CAPACITY: 1200g
- \ HC8200 CONSUMPTION RATE: 20g/min
- \ INTERFACE: Neutrik® powerCON TRUE1 IN/OUT
Seetronic® 3-pin XLR IN/OUT
- \ CONTROL: DMX 2 channels



SPARKULAR® Cyclone

- \ Impressive spark effect with adjustable height up to 10m
- \ Auto brake system, ensure immediate stop even in max output
- \ High frequency noise attenuation design
- \ Neutrik® powerCON TRUE1, both 3-pin and 5-pin XLR connectors
- \ Reinforced stainless steel panel structure



SPECIFICATIONS

- \ MODEL: BT61/BT62
- \ DIMENSION: 457×370×280mm
- \ WEIGHT: 27.0kg
- \ CASING MATERIAL: 304 stainless steel
- \ VOLTAGE: 220V(BT61)/110V(BT62), 50/60Hz
- \ WORK POWER: 1700W
- \ WORK TEMP.: -20°C~50°C
- \ EFFECT HEIGHT: 6-10m adjustable
- \ EFFECT DIRECTION: vertical
- \ HOPPER CAPACITY: 500g
- \ HC8200 CONSUMPTION RATE: 75g/min
- \ INTERFACE: Neutrik® powerCON TRUE1 IN/OUT
Neutrik® 3-pin&5-pin DMX IN/OUT
- \ CONTROL: DMX 2 channels



SPARKULAR® TRIPLE

- \ 3-directions SPARKULAR machine
- \ Triple heads, multi effects
- \ Separate control of each nozzle
- \ Neutrik® powerCON TRUE1 in/out
- \ DMX controllable
- \ RDMX function with SHOWVEN original host controller



SPECIFICATIONS

- \ MODEL: BT51/BT52
- \ DIMENSION: 400×290×270mm
- \ WEIGHT: 20kg
- \ CASING MATERIAL: carbon steel
- \ VOLTAGE: 220V(BT51)/110V(BT52), 50/60Hz
- \ WORK POWER: 1500W
- \ WORK TEMP.: -20°C~50°C
- \ EFFECT HEIGHT: 2-5m adjustable
- \ EFFECT DIRECTION: middle nozzle vertical
two nozzles angled at 25°
- \ HOPPER CAPACITY: 160g*3
- \ HC8200 CONSUMPTION RATE: 17g/min*3
- \ INTERFACE: Neutrik® powerCON TRUE1 IN/OUT
Neutrik® 3-pin&5-pin XLR IN/OUT
- \ CONTROL: DMX 6 channels



SPARKULAR STD®

- \ Original innovation introduced by SHOWVEN
- \ Patented non-pyro technology
- \ Safe, no gunpowder, no smoke and pyro smell
- \ Adjustable sparks effects from 1.5 to 5m
- \ Up to 10-20min effects time after fill up
- \ DMX controllable, can be started and stopped at any time
- \ Easy setup and teardown



SPECIFICATIONS

- \ MODEL: BT01/BT02
- \ DIMENSION: 200×218×305mm
- \ WEIGHT: 8.5kg
- \ VOLTAGE: 220V(BT01)/110V(BT02), 50/60Hz
- \ WORK POWER: 500W
- \ EFFECT HEIGHT: 1.5-5m adjustable
- \ INTERFACE: 3-pin XLR, POWER IN/OUT
- \ CONTROL: DMX 2 channels



SPARKULAR® mini

- \ Safe, non-pyro, no gunpowder and multi built-in safety sensors
- \ Integrated wireless technology, unexposed, anti-collision
- \ One button start, easy operation
- \ Tilt protection, safer for use
- \ Light weighted and compact design, easy to carry



SPECIFICATIONS

- \ MODEL: BT06/BT07
- \ DIMENSION: 168×180×228mm
- \ WEIGHT: 4.5kg
- \ VOLTAGE: 220V(BT06)/110V(BT07), 50/60Hz
- \ WORK POWER: 380W
- \ EFFECT HEIGHT: 2-2.5m (HC8200 MEDIUM), 3-3.5m (HC8200 LARGE)
- \ INTERFACE: 3-pin XLR, POWER IN/OUT
- \ CONTROL: DMX 2 channels, Wireless Remote





SPARKULAR® FALL

- \ Sparks “waterfall” effects for professional stage
- \ Fall length from 2-7m with different HC8200
- \ Up to 13-21min effects duration after fill up
- \ Easy setup and teardown with multi locations
- \ DMX / Wireless remote control, can be started and stopped at any time
- \ Switchable effects mode (Low Level/High Level)



SPECIFICATIONS

- \ MODEL: BT04/BT05
- \ DIMENSION: 196×208×192mm
- \ WEIGHT: 6.0kg
- \ VOLTAGE: 220V(BT04)/110V(BT05), 50/60Hz
- \ WORK POWER: 500W
- \ EFFECT HEIGHT: 2-7m(according to HC8200 type)
- \ INTERFACE: 3-pin XLR, POWER IN/OUT
- \ CONTROL: DMX 2 channels, Wireless Remote
- \ ADAPTABLE TRUSS SIZE: 40-60mm



SPARKULAR® miniFALL

- \ Sparks “waterfall” effects for indoor use
- \ New generation spark technology
- \ D-quiet Technology, low noisy
- \ Low power consumption, energy saving
- \ Neutrik® powerCON connectors
- \ Light weighted, easy for hanging and carry



SPECIFICATIONS

- \ MODEL: BT14
- \ DIMENSION: 150×160×240mm
- \ WEIGHT: 3.0kg
- \ VOLTAGE: 110V/220V, 50/60Hz
- \ WORK POWER: 130W
- \ EFFECT HEIGHT: 2-3m(HC8200 MEDIUM), 3-4m(HC8200 LARGE)
- \ INTERFACE: Neutrik® powerCON IN/OUT, 3-pin XLR IN/OUT
- \ CONTROL: DMX 2 channels, Wireless Remote
- \ ADAPTABLE TRUSS SIZE: 40-60mm



PORTABLE PACK

- \ Removable power supply for SPARKULAR and SPARKULAR mini
- \ Smart design, easy operation and installation
- \ Get rid of dependence on main power supply, achieve real wireless
- \ Ideal choice for outdoor events, weddings, mobile displays



SPECIFICATIONS

- \ MODEL: SP0520/SP0521
- \ DIMENSION: 266×235×130mm
- \ WEIGHT: 7.5kg
- \ OUTPUT: 220V(SP0520)/110V(SP0521), 500W
- \ BATTERY CAPACITY: 24V10AH



U-FLAMER™

- \ Fluid driven vertical flamer original designed by SHOWVEN
- \ Flame up to 8-10m, indoor nozzle optional for flame up to 5-7m
- \ Super compact pumping system design, easy carrying
- \ Stainless steel housing, IPX3 waterproof design, reliable and durable
- \ Built-in 5L fuel tank, no external hose connection needed
- \ Double electromagnetic valves design for additional safety
- \ Safety lock with switchable test mode, safer for service
- \ Tilt protection, the tilt sensor will be activated when machine slant Over 45°
- \ Intelligent control system, safer for use
- \ Standard DMX control, compatible with all DMX console
- \ Neutrik® powerCON TRUE1 connectors
- \ Built-in battery, support 10min continuous firing or 2 to 3 days standby
- \ Built-in wireless control with radio range up to 1km



SPECIFICATIONS

- \ Model: U-FLAMER™
- \ DIMENSION: 330×260×320mm
- \ WEIGHT: 14kg
- \ CASING MATERIAL: 304 stainless steel
- \ VOLTAGE: 100-240V, 50/60Hz
- \ POWER: 300W
- \ CONTROL: DMX/Radio (1km)
- \ INTERFACE: Waterproof 3-pin XLR IN/OUT
- \ FLAME HEIGHT: Nozzle L 5-7m/Nozzle M 8-10m
- \ FUEL: ISOPROPANOL, ISOPAR-G,H,L,M
- \ FUEL TANK CAPACITY: 5L
- \ FUEL CONSUMPTION RATE: Nozzle L 60ml/s / Nozzle M 30ml/s
- \ EFFECT DIRECTION: Vertical
- \ IGNITION: High voltage electron ignition
- \ BUILT-IN BATTERY: YES
- \ WATERPROOF LEVEL: IPX3



CIRCLE FLAMER

X-F1800

- \ Fluid driven flamer system with 210° swiveling angles
- \ Up to 88 preset firing sequences
- \ Nozzle front design, safer for operator
- \ Safety lock with switchable test mode
- \ Stainless steel nozzle, reliable and durable
- \ Double electromagnetic valves design for additional safety
- \ Double pump ensure stable pressure
- \ Fitted with igniter signal interface, compatible with fireworks firing system
- \ Neutrik® powerCON TRUE1 in/out, Neutrik® 3-pin & 5-pin DMX in/out
- \ Compatible with SHOWVEN original host controller



SPECIFICATIONS

- \ MODEL: X-F1800
- \ DIMENSION: 590×360×370mm
- \ WEIGHT: 30kg
- \ VOLTAGE: 100-240V, 50/60Hz
- \ POWER: 380W
- \ CONTROL: DMX
- \ INTERFACE: Neutrik® powerCON TRUE1 IN/OUT
Neutrik® 3-pin & 5-pin XLR IN/OUT
9V-60V Fireworks igniter signal port
- \ FLAME HEIGHT: up to 8-10m (no wind)
- \ ROTATE ANGLES: 210°(±105°)
- \ FUEL: ISOPAR-G, H, L, M; ISOPROPANEL, BIOETHANOL
- \ FUEL TANK CAPACITY: 10L
- \ FUEL CONSUMPTION RATE: 60ml/s
- \ EXT. BATTERY POWERED: YES



CIRCLE FLAMER

X-F3600

- \ Original innovation introduced by SHOWVEN
- \ Never seen flame effects up to 3 rotation cycles
- \ Full cycle and half cycle mode switchable
- \ Up to 182 preset firing sequences
- \ Nozzle front design, safer for operator
- \ Stainless steel nozzle, reliable and durable
- \ Safety lock with switchable test mode
- \ Double electromagnetic valves design for additional safety
- \ Double pump ensure stable pressure
- \ Fitted with igniter signal interface, compatible with fireworks firing system
- \ Neutrik® powerCON TRUE1 in/out, Neutrik® 3-pin & 5-pin DMX in/out



SPECIFICATIONS

- \ MODEL: X-F3600
- \ ROTATION MODE: FULL CIRCLE MODE/HALF CIRCLE MODE
- \ DIMENSION: 640×360×370mm
- \ WEIGHT: 30kg
- \ VOLTAGE: 100-240V, 50/60Hz
- \ POWER: 380W
- \ CONTROL: DMX
- \ INTERFACE: Neutrik® powerCON TRUE1 IN/OUT
Neutrik® 3-pin& 5-pin XLR IN/OUT
9V-60V Fireworks igniter signal port
- \ FLAME HEIGHT: up to 8-10m (no wind)
- \ ROTATE ANGLES: 1080° (up to 3 cycles)
- \ FUEL: ISOPAR-G, H, L, M; ISOPROPANOL, BIOETHANOL
- \ FUEL TANK CAPACITY: 10L
- \ FUEL CONSUMPTION RATE: 60ml/s
- \ EXT. BATTERY POWERED: YES



SMOKEJET

SONICBOOM™ X

- \ Instant smoke generation, as short as 0.2s
- \ Excellent heating component design, fast temp. recovery after each firing
- \ Super fast smoke dissipate with original fluid
- \ Low power mode, lower power supply requirement
- \ Fluid driven, no need of CO₂ tank, safer and easy carry
- \ No generation of CO₂, environmental friendly
- \ Easy installation at any angles even place upside down
- \ Super long stable effects time, up to 12min after fill up
- \ SONICBOOM mode, sound and smoke double effects
- \ Pipeline integration technology, reliable and easy maintenance
- \ Unique constant pressure system, consistent smoke effect
- \ Independent smoke column color change



SPECIFICATIONS

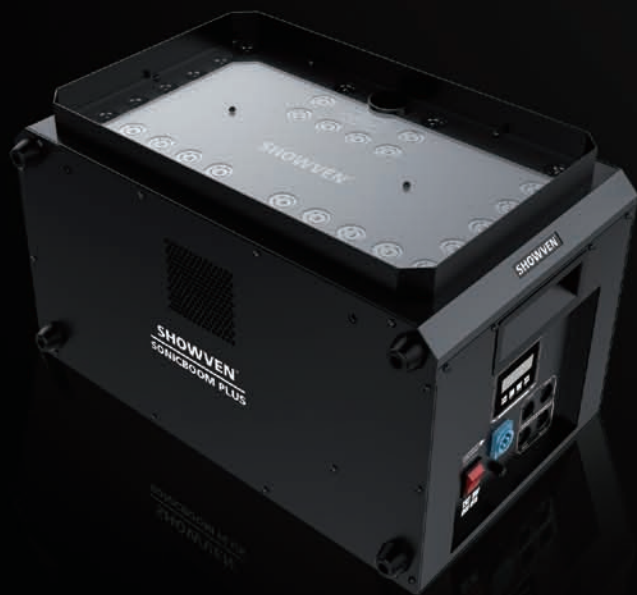
- \ MODEL: SONICBOOM™ X
- \ DIMENSION: 482×408×215mm
- \ WEIGHT: 17.2kg
- \ VOLTAGE: 220V/110V, 50/60Hz
- \ FUSE: 15A/250V
- \ POWER: 3000W/1500W(220V), 2000W(110V)
- \ LED POWER: 5W×35pcs
- \ MAX OUTPUT DISTANCE: 10m
- \ MAX CONTINUOUS OUTPUT DURATION: 8s
- \ SMOKE OUTPUT: 55000cuft/min
- \ TANK CAPACITY: 2.5L
- \ FLUID CONSUMPTION RATE: 5min/L
- \ DMX CHANNELS: 1/11
- \ CONSUMABLES: FX-S



SMOKEJET

SONICBOOM™ PLUS

- \ Instant smoke generation, as short as 0.2s
- \ Excellent heating component design, fast temp. recovery after each firing
- \ Dual output design, faster and denser smoke
- \ Super fast smoke dissipate with original fluid
- \ Low power mode, lower power supply requirement
- \ Fluid driven, no need of CO₂ tank, safer and easy carry
- \ No generation of CO₂, environmental friendly
- \ Easy installation at any angles even place upside down
- \ Pipeline integration technology, reliable and easy maintenance
- \ Unique constant pressure system, consistent smoke effect
- \ Independent smoke column color change



SPECIFICATIONS

- \ MODEL: SONICBOOM™ PLUS
- \ DIMENSION: 500×324×325mm
- \ WEIGHT: 28kg
- \ VOLTAGE: 110V-220V, 50/60Hz
- \ FUSE: 15A/250V(220V), 18A/250V(110V)
- \ POWER: 3000W/1800W(220V), 2400W/1800W(110V)
- \ LED POWER: 9W×38pcs
- \ MAX OUTPUT DISTANCE: 10m
- \ MAX CONTINUOUS OUTPUT DURATION: 10s
- \ OUTPUT: 80000cuft/min
- \ FLUID CONSUMPTION RATE: 3min/L
- \ TANK CAPACITY: 5L
- \ DMX CHANNEL: 1/11/14
- \ CONSUMABLES: FX-S



PRO FOG MACHINE

X-S3000

- \ Rotary output control button, convenient smoke amount adjustment
- \ Super long effect time, max output up to 40s, continuously in low output mode
- \ Optimized atomizer with high precision circuit, ensure more uniform smoke effect
- \ Neutrik® powerCON, 3-pin and 5-pin DMX connectors
- \ Build-in LCD screen, user friendly



SPECIFICATIONS

- \ MODEL: X-S3000
- \ DIMENSION: 660x404x290mm
- \ WEIGHT: 16.6kg
- \ POWER: 3000W(220V), 2000W(110V)
- \ OUTPUT DURATION: 40s(Max output), continuously (Low output)
- \ FOG OUTPUT: 40000cuft/min
- \ TANK CAPACITY: 9L
- \ DMX CHANNELS: 1 channel

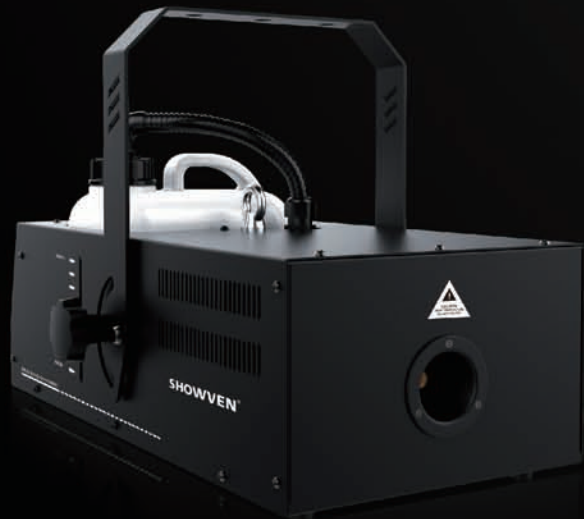




PRO FOG MACHINE

P-S1500

- \ Smart yet robust fog output
- \ Stable performance, reliable and durable
- \ Optimized atomizer with high precision circuit, ensure more uniform smoke effect
- \ Wireless control adopts redundancy technology, better anti-interference ability
- \ Flexible group shooting with original remote control
- \ Neutrik® powerCON and DMX connectors
- \ Build-in LCD screen, user friendly



SPECIFICATIONS

- \ MODEL: P-S1500
- \ DIMENSION: 490×310×260mm
- \ WEIGHT: 10.8kg
- \ POWER: 1500W
- \ MAX OUTPUT DISTANCE: 6m
- \ FOG OUTPUT: 25000cuft/min
- \ TANK CAPACITY: 3L
- \ DMX CHANNELS: 1 channel



HOST CONTROLLER

- \ Extremely simple design, easy operation
- \ Exclusive RDMX function, remote monitoring of machine status
- \ Built-in special effects mode
- \ Built-in battery, 5-8h battery life
- \ Support SPARKULAR, CIRCLE FLAMER and SONICBOOM
- \ DMX 512



SPECIFICATIONS

- \ MODEL: ZK6200/ZK6300
- \ DIMENSION: 390×300×110mm
- \ WEIGHT: 3.5kg
- \ VOLTAGE: 100-240V, 50/60Hz
- \ POWER: 15W
- \ MAX CASCADE OF SPARKULAR: 18units (ZK6200)/ 54units (ZK6300)
- \ SUPPORT MACHINES: SPARKULAR series, CIRCLE FLAMER series, SONICBOOM series

CONSUMABLES

HC8200

- \ No smoke, no pyro smell
- \ Granulated alloy, non-hazmat storage
- \ DGM tested, can be shipped by air/sea
- \ RoHS certified, environmental friendly
- \ Aluminum foil bag vacuum packaging, long shelf life



HC8200 type	Weight/bag	Package	Support model
HC8200 MEDIUM	45g/bag	12bags/box 48boxes/carton	SPARKULAR mini
HC8200 LARGE	50g/bag		
HC8200 MEDIUM	200g/bag	12bags/box 12boxes/carton	SPARKULAR, SPARKULAR FALL SPARKULAR miniFALL, SPARKULAR Cyclone SPARKULAR PRO, SPARKULAR SPIN SPARKULAR JET
HC8200 LARGE			SPARKULAR FALL, SPARKULAR Cyclone SPARKULAR PRO
HC8200 LARGE I			
HC8200 LARGE II			SPARKULAR FALL, SPARKULAR Cyclone
HC8200 LARGE III			SPARKULAR Cyclone

DISTRIBUTEUR OFFICIEL



PREMIUM FACTORY

Professional Special Effects

ASK US FOR YOUR PROFESSIONAL PRICES !



PREMIUM FACTORY SAS - DISTRIBUTEUR OFFICIEL
1 Route Neuve, 71710 MONTCENIS – FRANCE
Office +33 805 69 13 27 | Fax +33 972 65 68 12 |
info@premiumfactory.eu | www.premiumfactory.eu

SHOWVEN®